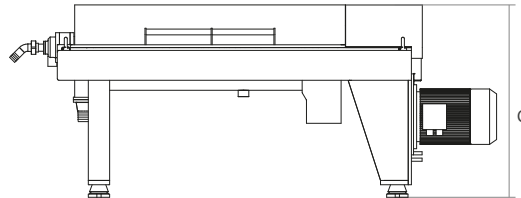
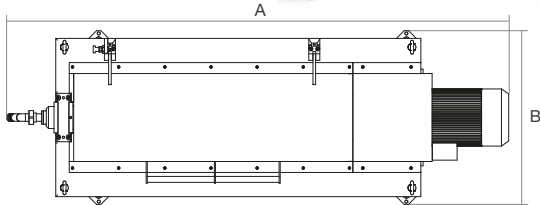


## Plant and Equipment for Sludge Dewatering from Wastewater and Industrial Process

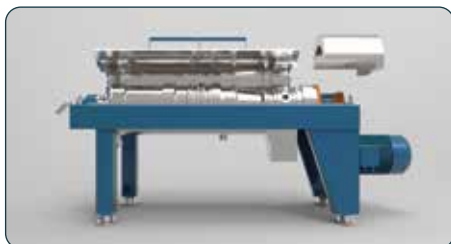


### CENTRIFUGES SERIES

Modello GA	Diametro tamburo	Snellezza L/D	Potenza motore principale	Giri max Tamburo	Max Accelerazione	Lunghezza A	Larghezza B	Altezza C	Mass	Portata idraulica	
Size GA	Bowl Diameter		Main motor Power	Bowl Max speed	Max Acceleration	Length A	Width B	Height C	Weight	Hydraulic capacity [ m <sup>3</sup> /h ]	
* / **	[ mm ]		[ kW ]	[ rpm ]	[ m/s <sup>2</sup> ]	[ mm ]	[ mm ]	[ mm ]	[ kg ]	Versione Version STD H	
240	240	4,83	5,5 / 7,5	6.000	53.500	2.200	720	900	800	5	6
300	300	3,35	7,5 / 11	5.900	53.500	2.280	900	1.190	1.200	8	9
300 L	300	4,8	11 / 15	5.900	53.500	2.750	700	1.350	1.100	10	12
400	400	3,27	11 / 15	4.000	34.200	3.000	1.140	1.420	1.900	16,5	20
400 L	400	4,80	15 / 18,5	4.000	34.200	3.550	950	1.500	2.500	35	40

**\* HYDRAULIC set up (H)**  
All set up are in "High Yield" and them can be equipped with hydraulic high-pressure electronically controlled to manage and change the differential speed between screw and drum.

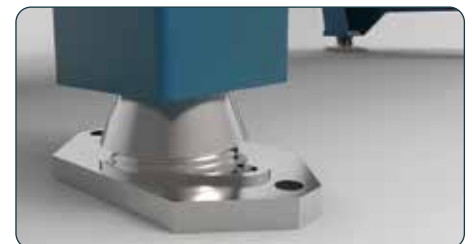
**\*\* Steep set up (R)**  
The conical part of the drum may have a configuration further tilted (R=15°) for particular machining requirements and dewatering and thus it can respond to all market demands.



The centrifugal extractor supporting structure is made of high quality and painting thick carbon steel. The lower cover and the discharge hoppers are made of standard 304 stainless steel or 316L on request. The upper cover of the drum can be opened to facilitate access to maintenance.



The discharge bushings of the dehydrated solid phase, coming out from the drum, are made of ceramic material with high mechanical resistance, which can be repositioned and replaced on site.



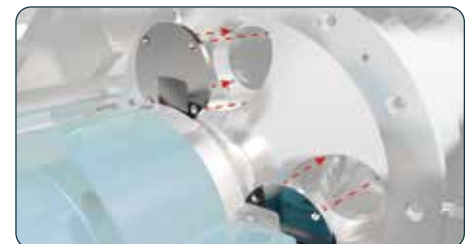
The centrifugal extractor supporting structure rests on the ground in 4 points each equipped with an anti-vibration support that ensures optimal filtration of the centrifuge during the work phases.



Direct access to the main bearings for a quick and easier maintenance without the need to remove the drum.



Hinges equipped with safety devices to lock the top cover when it is open for inspections / maintenance.



Adjustable liquid output levels that can be adjusted and replaced to optimize purity's degree.

